

CERTIFICATE OF LOCATION OF GOVERNMENT CORNER

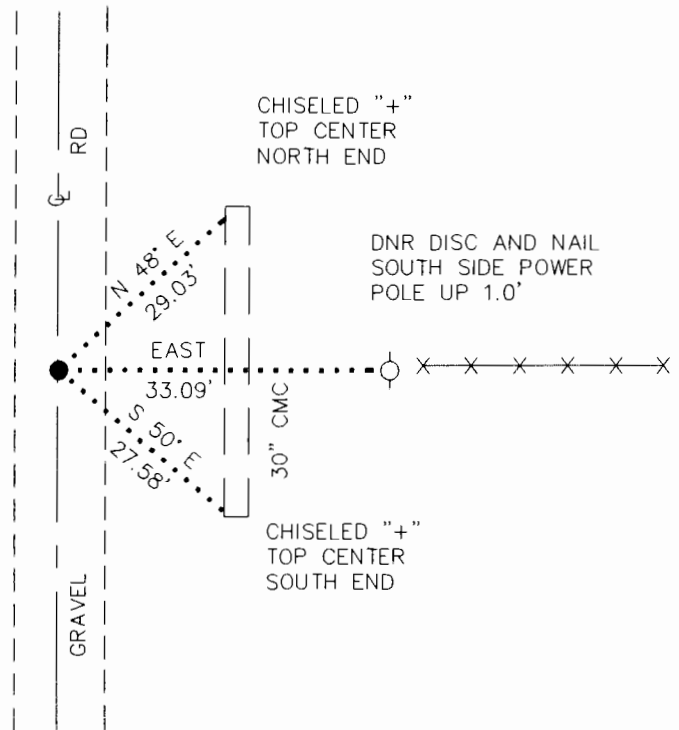
EAST QUARTER Corner of Section 16, Township 105 N., Range 42 W., 5 th P.M.

STATE OF MINNESOTA, County of MURRAY

At the corner location shown on the sketch:

- On _____ found a _____
DATE
- left monument as found, lowered monument, removed monument (explain)
- On 9/14/92 Placed a 3/4" X 24" REBAR WITH ALUMINUM CAP STAMPED
DATE
"MN DNR SURVEY MARKER," DOWN 0.5'

SKETCH OF REFERENCE TIES



NOTE:
MONUMENT IS
IN LINE WITH FENCE EAST

1983 MURRAY COUNTY
COORDINATE SYSTEM
N = 118653.861
E = 469117.315

BEARINGS OBSERVED WITH COMPASS

Statement of evidence relative to this corner location is on back of page. 10/7/92
WMA01187.00.00.01

I hereby certify that this document and the data contained herein was prepared by me or under my direct supervision.

Lowell R. Pomeroy 10-26-92
SIGNATURE DATE

Registration No. 17005
 Land Surveyor, Professional Engineer
 County Surveyor, County Engineer

OFFICE OF THE COUNTY RECORDER
County of MURRAY

I hereby certify that this document was filed in the Co. recorders office at _____ .M. on the _____ day of OCT 27 1992 A.D., 19____
County Recorder *James V. Johnson*
By _____, Deputy
DOCUMENT NO. _____

East Quarter Corner Section 16, Township 105 North, Range 42 West

The DNR Bureau of Engineering contacted the following offices for information on this corner:

MN Secretary of State
Murray County Recorder and Highway Engineer
Moseng Land Surveying at Marshall
Madsen Land Surveying at Fairmont

1861 The U.S. General Land Office notes, on file in the Secretary of State's Office, show the corner marked with a post, made mound with trench and pits as per instructions.

1992 August 20, the DNR Bureau of Engineering conducted a search for this corner, but found no evidence of a monument. Located the existing occupation in the area, which consisted of a north-south road and fence line east. Hired a backhoe operated by Dudley Johnson, of Johnson Ditching and Plumbing from Lake Wilson, to dig for evidence of this corner. Dug a 8 ft x 8 ft hole centered on the intersection of the above mentioned occupation to a depth of 4 ft, but found nothing. The above mentioned intersection was found to measure:
2614.49 ft. from the northeast corner Section 16
2632.05 ft. from the northeast corner Section 21

Analysis of the available information led the DNR Bureau of Engineering to conclude that the intersection of the north-south road and fence line east marks the location of the corner.